



The Bottom Line

A MONTHLY PUBLICATION OF THE TULSA CHAPTER IMA

NOVEMBER 2011

IN THIS ISSUE:

- Meeting Information
- Letter from the President
- A Tribute to Adele Davis
- CMA Study Tips
- Free Webinar
- Anniversaries
- New Members
- CMA Testing Windows
- Membership Discount
- Social Media
- Meeting Schedule
- Just for Fun

November Meeting Information

Topic: Emotional Intelligence: One Company's Seven Year Journey

Speaker: Alan Vanderburg

Date: November 15th

Time: 11:30 am —1:00 pm

Location: Driller's Conference Center at ONEOK field—201 N Elgin Ave

Cost: \$20 members; \$25 non-members and guests; \$10 students

About the Speaker:

Alan Vanderburg began working at the Bama Companies more than 25 years ago. Alan's work



experience includes production, finance, distribution, training, organizational development, and emotional intelligence (EQ). Alan has been a leader in several

improvement initiatives at Bama including The Balanced Scorecard, Edward Deming methodology, Six Sigma practices, Prometheus strategic planning, Stephen Covey Habits and Emotional Intelligence. Alan played a significant role in 2005, when The Bama Companies was awarded the nations highest quality award, the Malcolm Baldrige award.

In addition to the work at Bama, Alan is also an adjunct professor at St. Gregory's University in Tulsa, Oklahoma.

Alan has a Bachelors degree in Organizational Behavior from Southern Nazarene University and a Masters Degree in Human Relations from the University of Oklahoma.

Letter from the President

Recently, I was reminded how fragile and precious life is. Unfortunately, the reminder came at a heavy price and with a great loss to the IMA and the Tulsa Community. It is with a very heavy heart that I recount the passing of

long time IMA Board Member Adele Davis.

I knew Adele (A-day-la, the German pronunciation from her father's family) was an amazing woman, but it was only after reading tribute

emails sent by her closest

friends that I realized how truly wonderful she was. I only wish I had taken the time to build a stronger friendship with her when I had the (continued on p3)



A Tribute to Adele Davis

Adele Kay Weigl Davis studied at the University of Oklahoma, the University of Houston, and the University of Tulsa, obtaining a bachelor's degree in accounting and an MBA. Her career included work for the Texas Comptroller, Tyler Dawson, Transok, Blue Cross Blue Shield, and Atlas Pipeline Mid-Continent.

She simultaneously worked, went to school, and raised two children. She was proud

of her children's accomplishments and good lives. She is survived by daughter Chris Ashley, son in law Adam, grandsons Sam and Gus Ashley; and son Zachary Davis and daughter in law Tiffanie.

She loved books and was a long time book club member. She loved concerts of all types and owned more music than anyone we know. She was passionate about OU Football and animals of all kinds.

Adele has always had pets in her life. When she was young, she had a pet chicken, and the stories she told about her dad and that chicken made you laugh until you cried. She was a frequent donor to the Tulsa Zoo, where her daughter Chris works as a bird curator.

She was a great friend. We will miss her rapid-fire conversation and her reliable presence when it counted.

Remembrances

"[Some of my favorite memories are] her visits to New Orleans while I was working down there. Mardi Gras, trying out local restaurants, visiting the French Quarter and Magazine street. Then, when my job ended, Adele and another friend flew down to drive back with me. It took us three days to make the trip, because we stopped and shopped almost every town along the way. Course we had to load up on Crispy Kreme doughnuts on the way out of town since they weren't in Tulsa yet. I'm fairly sure one box did not make it out of town! – Vicki Coleman

"Adele was always up for trying a new place to eat, or while travelling, she knew the best place to go in that locale. It didn't matter if it was a small town with only a tastee freeze, she knew the secret food to order." – Dana Noe

"Adele was a very caring generous person and would help anyone in anyway she could. I miss her TERRIBLY every single day. I think we passed emails back and forth almost EVERY day, so when I receive a joke from someone, I still want to forward it on to her and when I receive 'dog needs a home', I always think of her." - Judy Meyer

"I remember us discussing filing property tax returns - Adele loved it! I remember her telling me how she loved dealing with the different jurisdictions and negotiating and saving money on property tax. I have had some experience with this and it is not fun - you have to really know the property tax laws and how many of us love any kind of tax filing? Adele was very confident and passionate about her tax filing work." - Sandra Rosette

"Adele had the gift that we would all would like to have, she accepted everyone on

their own merits and was a friend to all. She once told me that you don't always have to like someone, but you should always respect them, only they know the road that they have traveled." – Michael Pinnell

"I always left with a smile when talking with Adele. She just had a way of pointing out the humor in any situation." – Christina Bates

"Adele had such a sharp wit. I never regretted seeing her." – Duane Duvall

"Adele was a wonderful person and a valuable and dependable board member. Personally, I think I will miss her witty comments more than anything else - she always made me smile" - Kimberley Joyce

*No one ever
really dies as
long as they
took the time
to leave us with
fond
memories.*

*~Chris
Sorensen*

TULSA CHAPTER**Board of Directors****President**
KIMBERLY JOYCE**President Elect**
MIKE TURNER**Treasurer**
SANDRA ROSETTE**VP – Communication**
KIMBERLY JOYCE**VP – Prof. Devel**
ROBERT COKE**VP – Member Devel**
KAREN WALKER**Secretary**
CHRISTINA BATES**Director —CMA**
SANDRA ROSETTE**Director – Meetings**
VALERIE BOHBRINK**Director – Speakers**
MIKE TURNER**Dir - Employment**
DUANE DUVALL**Director – Community**
JENNIFER MITCHO**Dir – Public Relations**
LAURA GREENLEE**Director – Roster**
MARY KASSAB

Letter from the President

(Continued from Page 1)
opportunity.

Adele was an animal lover, a true foodie, and a great traveler who believed that the journey was as important as the destination. She was a fierce competitor who excelled at everything she attempted, and was simultaneously kind, open minded, and accepting of all. She treasured books, music, and concerts. She shared her friends liberally. She was wise and witty and will be missed terribly.

As accountants, it is easy for us to get trapped in a monthly cycle of reporting and deadlines, and to neglect to spend the time necessary to build deep and meaningful relationships. Professionally, we tend to focus more on intellectual intelligence (IQ) and less on emotional intelligence (EQ). At our CPE lunch this month, Alan Vanderburg will discuss the importance of the IQ/EQ balance in today's workplace. It seems to me that his topic could not be more

timely.

Please take a few minutes to read the tribute to Adele, and then take a few moments to reflect on what is genuinely important in your life. Are you focusing on the "big rocks?"

See you soon,

Kimberly

CMA Advice

- Melissa Leonard; Gleim Chapter Coordinator

Becoming certified as a CMA or any other certified professional is a huge accomplishment that should fill you with personal pride. This achievement will open professional doors to you, as it demonstrates that you have the proper educational training along with the drive and determination you must possess to prepare for and pass the certification exams.

This new accomplishment comes with a responsibility to educate your colleagues, students, and fellow chapter members about what a certification can do for them. Consider mentoring a co-worker who may be contemplating

certification. Share with him or her how the certification has helped you or how it felt when you passed your final part.

The Gleim CMA Review System comes with access to a Personal Counselor who can help set up a study plan and will guide the candidate regardless of where he or she is in the certification process. For those candidates who are not yet certified and have not started the process, there is no time like the present. Apply to take the exam, purchase your CMA Review materials, and start studying immediately. The sooner you begin, the sooner you will pass and start to enjoy the benefits of being certified.

And if you have started but not yet finished, dedicate your time to follow your study schedule and get certified in 2011.

Gleim is committed to helping you accomplish your goal of passing the exam and becoming a CMA. Your Tulsa IMA Chapter has partnered with Gleim to ensure your success on the CMA exam! Working together, we will provide the necessary tools to prepare you for this difficult exam.

As a Tulsa Chapter member, you receive significant discounts on the Gleim CMA Review materials and CPE. Contact Melissa Leonard at 800.874.5346 ext. 131 or melissa.leonard@gleim.com to take advantage of the offer or if you have any questions.



Free Webinar



Interviewing Strategies Every Manager Should Know

November 9, 2011—1:00 pm EST

Description: Today's managers are finally getting the okay to hire, but after nearly two years of hiring

freezes, most managers feel a little "rusty" when it comes to the selection and interview process. Interviews are the most important piece of the hiring process. Poorly executed interviews can drive away good candidates and make inadequate candidates look like stars.

Join us as we explore four key interview styles that you can leverage to obtain valid answers and insights about your potential candidates. Learn how to use these techniques to reveal the true strengths, weak-

nesses and personalities of your candidates and, ultimately, hire the best talent.

Price: FREE for IMA Members
CPE Credit: 1 CPE Credit

To register point your browser to:
www.imanet.org/learning_center/webinars.aspx

You will need your IMA number to register.

The CMA exam is offered according to the following schedule:

Window 1 -
January and February

Window 2 -
May and June

Window 3 -
September and October

The test is offered at the PROMETRIC testing center in Tulsa at 3015 E Skelly Dr

Anniversaries and New Members

Years	Member	31	Carl Nash	8	Kimberly Ann Joyce
56	W W Branstetter	29	Ralph Layne	5	Toby Wegner
54	K Haesloop	22	Jeffrey Burns	5	Cynthia Pulchry
45	Marvin Krueger	22	Glenn Carlson	4	Robert Coke
45	William Hackett	22	Kent Cooper	4	Neil Jalapit
44	Clifford Hutton	20	Sarah Dobbs	3	Jolie Odam
44	Donald Wagner	19	Karen Cravens	3	Joshua Hass
40	Glenn Elliott	16	Wray Bradley	2	Rachel Manuel
39	John Neas	16	Edward Alexander	1	Robert Haan
38	Michael Evanson	14	Lori Graflund		
33	John Thomas	10	Karen Walker		

Welcome New Members!
Frauke Quiroga—Joined Oct

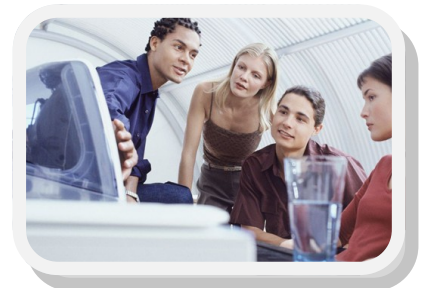
MEMBERSHIP DISCOUNT

10% off all membership categories and no processing fee.

Use code **TULSAMEMI** when you register at

www.imanet.org

Hurry! This offer expires November 14, 2011





Tulsa Chapter IMA

PO BOX 54784
Tulsa, OK 74155

www.tulsaima.com
E-mail: tulsa.ima@gmail.com



We meet on the third Tuesday of the month at ONEOK Field in downtown Tulsa. Lunch begins at 11:30 am, and the speaker begins at noon.

12/20/11 - Joint Meeting with OkEthics @ DoubleTree Downtown Tulsa

1/17/12 - Toni Rahilly, Deloitte Tax LLP: "2012 Tax Update"

2/21/12 - Deidre Myers, Director - Okla Dept of Commerce: "Growing Business in Oklahoma"

Registration is available online and credit card payments are accepted electronically at www.tulsaima.com/meeting_payment.php

Payment at the meeting is limited to cash or check.

Just For Fun



"Of students surveyed, 64% prefer English and 32% prefer math. The fact that these numbers do not add up to 100 may help explain why."

Top 10 Signs Your Accountant is Nuts - © David Letterman

10. In several places on your tax forms, he's written, "Give or take a million dollars."
9. Tells you to put all your money into British cattle futures.
8. You notice that his "calculator" is just a broken VCR remote.
7. Insists that there is no such number as four.
6. His "short form" looks suspiciously like a cocktail napkin
5. Counts family of squirrels living in your yard as dependents.
4. Advises to save you postage by filing your taxes telepathically.
3. Instead of a CPA license, he's got a framed photo of a shirtless Alex Trebek.
2. Frequently uses the word "eleventeen"
1. On the 1040, he lists your occupation as "sucker"